

The logo for Te Aorere Kura is a stylized, colorful emblem. It features a central white figure that resembles a traditional Māori koru or a stylized 'A' character, set against a background of orange and purple. The emblem is enclosed within a diamond-shaped border with intricate scrollwork details.

Te Aorere Kura

The Enduring Spirit of Affection
**Action Plan for the National Strategy to
Eliminate Family Violence and Sexual Violence**

December 2021 – December 2023

Minister's Foreword

Te Aorerekura sets a collective ambition to create peaceful homes where children, families and whānau thrive; to enable safe communities where all people are respected; and to support the wellbeing of our nation. It represents an evolution in our journey to address violence in our homes and communities.

Within the Strategy we have identified the actions that are required for us to make changes and it is clear that whole of government action is required. We know that central to our success is our ability to work together and our willingness to work differently.

The Action Plan has been developed to reflect this need. We will work with our community partners to refresh and update these actions.

Hon Marama Davidson

*Minister for the Prevention
of Family Violence and
Sexual Violence*



Te Aorerekura action plan: introduction

Te Aorerekura sets a collective pathway for tangata whenua, community specialist sectors and government to work together to eliminate family violence and sexual violence. While there is significant work under way already, Te Aorerekura provides a framework to prioritise and accelerate this work, while identifying where more and different actions are needed.

The Action Plan sets out government actions and what government will remain directly accountable for as new ways of working are developed to implement Te Aorerekura. Eliminating family violence and sexual violence will only occur if we change the way we work, and how we think about the supports people need to prevent, address and heal from violence. These changes are set out in the six shifts below:

1. **Towards strength-based wellbeing** (page 10)
2. **Towards mobilising communities** (page 16)
3. **Towards skilled, culturally competent and sustainable workforces** (page 22)
4. **Towards investment in primary prevention** (page 28)
5. **Towards safe, accessible and integrated responses** (page 36)
6. **Towards increased capacity for healing** (page 42)

Across the six shifts, are 40 initial actions with proposed activities. Most actions will be delivered by government making better use of existing resources.

The actions will collectively deliver change through six system impacts, which will achieve eight impacts to improve the lives of all people in Aotearoa New Zealand.

Impacts on system

- Government commitment to addressing the underlying social conditions and norms.
- Government and communities work better together.
- Primary prevention is aligned.
- Communities design, lead and deliver solutions to affect change.
- Workforces are skilled, culturally competent and sustainable.
- Services are joined up, timely and easy to navigate.

Impacts on people

- Children and young people understand healthy relationships, how to seek help, and can access tailored services.
- Participants in the system are protected, safe and supported.

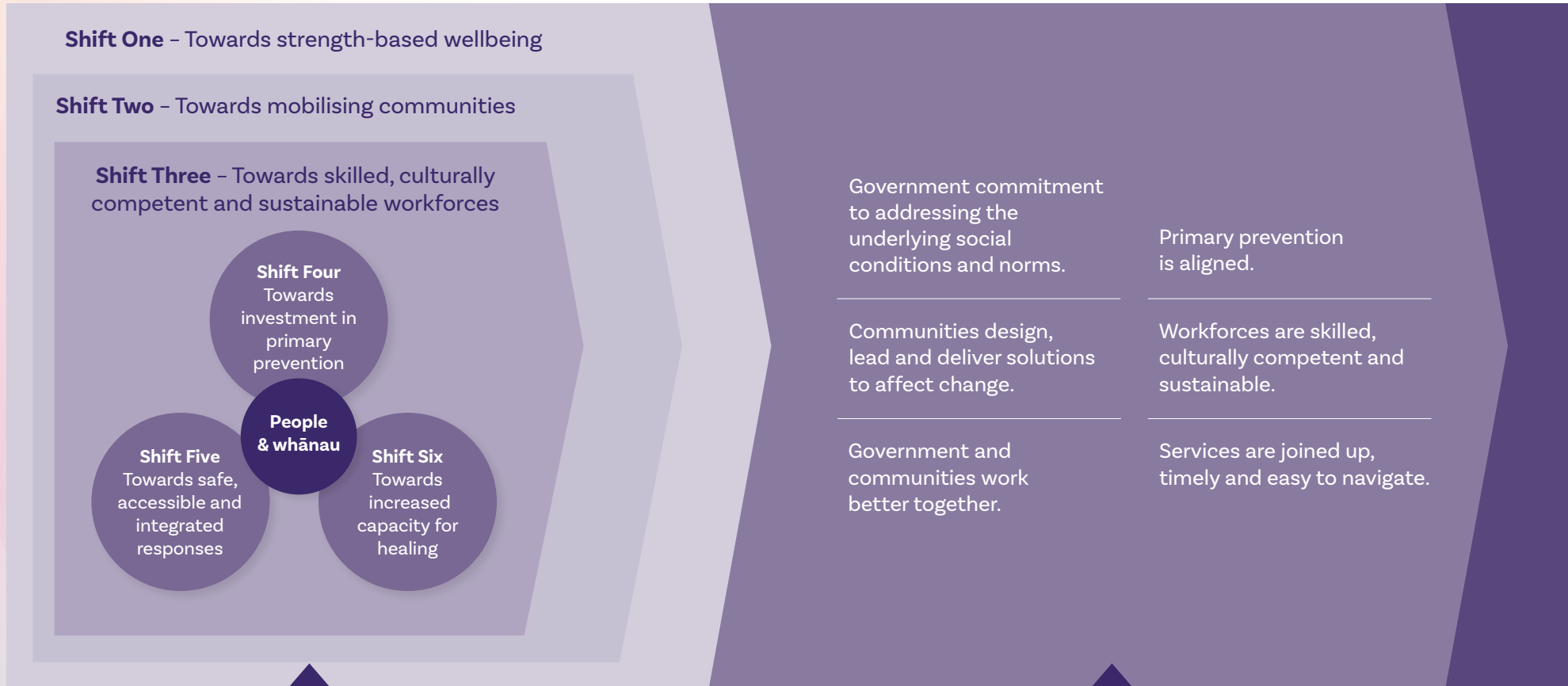
- Individuals and whānau are supported to heal and overcome the trauma of violence.
- Tangata whenua, Pacific peoples, ethnic communities, LGBTQIA+ communities, older people, children and youth, and disabled communities can access tailored services and supports.
- Women, wāhine Māori and others impacted by violence access integrated and inclusive responses to enable safety.
- People who use violence are accountable and supported to change.
- Reduced tolerance for violence and inequity across Aotearoa.
- Families, whānau and communities take action to prevent family violence and sexual violence.

Lead government agencies, and contributing agencies, have been identified for each action to enable clear accountability for delivery. The actions will be reviewed and refreshed annually, following an annual hui by tangata whenua, communities and the specialist sectors alongside government. This hui is to discuss progress and what we all have learned through undertaking these actions and working collaboratively.

Te Aorerekura on a page

We will change the way we work...

...by creating a system that enables...



Learning and Monitoring Progress

Principles Equity and Inclusion Aroha

Te Tiriti o Waitangi Kawanatanga

...change for all people.

Children and young people understand healthy relationships, how to seek help, and can access tailored services.

Participants in the justice system are protected, safe, and supported.

Individuals and whānau are supported to heal and overcome the trauma of violence.

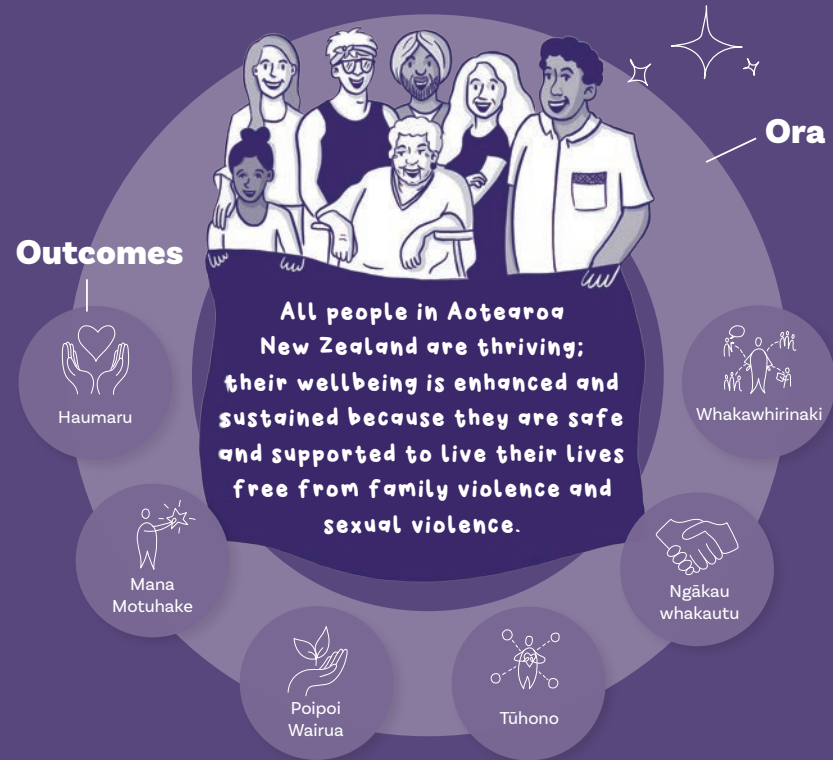
Tangata whenua, Pacific peoples, ethnic communities, LGBTQIA+ communities, older people, children and youth, and disabled communities can access tailored services and supports.

Women, wāhine Māori and others impacted by violence access integrated and inclusive responses to enable safety.

People who use violence are accountable and supported to change.

Reduced tolerance for violence and inequity across Aotearoa New Zealand.

Families, whānau and communities take action to prevent family violence and sexual violence.



A learning system that collects evidence, tangata whenua advice and the voices of communities, to continually improve and change.

Tika and Pono

Kotahitanga

Kaitiakitanga

Tino Rangatiratanga

Oritetanga

Actions on a page

Shift One: Pg10 Towards strength-based wellbeing

- Action 1:** Te Aorerekura is supported by a clear investment plan
- Action 2:** Agencies integrate community-led responses
- Action 3:** Strengthen wāhine Māori leadership
- Action 4:** Wāhine Māori leadership succession

Shift Two: Pg16 Towards mobilising communities

- Action 5:** Engage and value communities in collective monitoring, sharing and learning
- Action 6:** Relational approach to commissioning to better support community decision-making and needs
- Action 7:** Enable Te Aorerekura implementation in the regions
- Action 8:** Establish a Ministerial Tangata Whenua Advisory Group
- Action 9:** Establish an annual Te Aorerekura Hui

Shift Three: Pg22 Towards skilled, culturally competent and sustainable workforces

- Action 10:** Develop and implement trauma-informed family violence and sexual violence capability frameworks for specialist workforces
- Action 11:** Agencies implement capability frameworks for generalist workforces
- Action 12:** Build tools for communities and informal helpers
- Action 13:** Invest in upskilling community primary prevention
- Action 14:** Build the specialist workforces for children
- Action 15:** Build court workforce capability

Shift Four: Pg28 Towards investment in primary prevention

- Action 16:** Adopt the Primary Prevention System Model
- Action 17:** Develop tools to support healthy, consensual relationships for young people
- Action 18:** Refresh the health and physical education curricula
- Action 19:** Develop the Oranga Whakapapa programme

Action 20: Develop community mobilisation infrastructure to lead sexual violence primary prevention

Action 21: Deliver prevention initiatives: Campaign for Action on Family Violence, E Tū Whānau and Pasefika Proud as well as for other population groups including older people

Action 22: Develop and deliver a sexual violence primary prevention campaign for tangata whenua and Tauīwi

Action 23: Develop prevention programmes for ethnic communities

Action 24: Holistic support for safe early years

Action 25: Develop social and emotional learning for children

Action 26: Strengthen community-led solutions to prevent child sexual abuse

Shift Five: Towards safe, accessible and integrated responses

Pg36

Action 27: Develop new practice guidelines for supporting participants in court proceedings

Action 28: Implement safeguarding responses for disabled and vulnerable adults

Action 29: Develop a plan to fill the service gaps for family violence

Action 30: Develop a plan to fill the service gaps for sexual violence

Action 31: Develop a case management system for family violence responders

Action 32: Improve the Family Start service

Shift Six: Towards increased capacity for healing

Pg42

Action 33: Undertake an analysis of healing services and responses to determine gaps and opportunities

Action 34: Develop training and resources for parents, caregivers, and whānau

Action 35: Design local tangata whenua services for sexual violence healing and restoration

Action 36: Extend and expand whānau-centred initiatives

Action 37: Extend and expand whānau-centred early intervention

Learning and monitoring

Pg46

Action 38: Continuously develop and improve the learning system through the collection of evidence and voices

Action 39: Work together to finalise the measurement framework

Action 40: Invest in monitoring and learning to build the evidence base for primary prevention

Key – Reform and Strategy links

Some actions may have links to work already under way and will be denoted by these circular icons.

Work Underway



Child and Youth Wellbeing Strategy



Whānau led initiatives



Royal Commission of Inquiry into Abuse in Care



Kia Manawanui Aotearoa
(Long-term pathway to mental wellbeing)



Lalanga Fou Pacific Strategy



He Oranga Kaumatua – Better Later Life



Every Life Matters - He Tapu te Oranga o ia Tangata
(Suicide Prevention Strategy)



Disability Strategy and Action Plan



Mana Wāhine Inquiry



Social Sector Commissioning



Te Ao Marama
(Ministry of Justice)



Hōkai Rangi
(Ara Pourama Aotearoa)

Key – Action links

Some actions may have links to other actions and will be denoted by these circular icons. The shift will be denoted by the colour and the action by the number.

1-4

Shift One:
Towards strength-based wellbeing

5-9

Shift Two:
Towards mobilising communities

10-15

Shift Three:
Towards skilled, culturally competent and sustainable workforces

16-26

Shift Four:
Towards investment in primary prevention

27-32

Shift Five:
Towards safe, accessible and integrated responses

33-37

Shift Six:
Towards increased capacity for healing

38-40

Learning and monitoring



Shift One:

Towards strength-based wellbeing

Adopt a **strength-based wellbeing** approach that will integrate all aspects by adopting the **Tokotoru model** with a focus on changing the social conditions, structures and norms that perpetuate harm.



What is this shift about?

There is no easy road to eliminating family violence and sexual violence. It will require government, tangata whenua, communities and the specialist sectors to take a wellbeing and safety approach across all actions.

Te Aorerekura sets out an approach for all people to work together to enhance safety and wellbeing. This shift will embed an interconnected, strength-based approach, using the Tokotoru prevention and wellbeing model (see page 34 of the Strategy) to support the elimination of family violence and sexual violence.

Adopting the Tokotoru model as the framework for eliminating family violence and sexual violence supports and services will guide the government's investment in healing, prevention and response now and into the future.

The first two years of actions for this shift are focused on laying the foundations for an enduring strategy. To ensure we can achieve the moemoeā, we will start by weaving the wairua into the fabric of how we work, invest and collaborate. Together these actions will strengthen how agencies put people, families and whānau at the centre of government's work, to redirect efforts to take a wellbeing and safety approach across all actions.

Actions

- 1 Te Aorerekura is supported by a clear investment plan**
- 2 Agencies integrate community-led responses**
- 3 Strengthen wāhine Māori leadership**
- 4 Wāhine Māori leadership succession**

Shift One: Towards strength-based wellbeing

1 Te Aorerekura is supported by a clear investment plan

A Government investment plan will fundamentally shift and guide activities so that they align with the Tokotoru model. This action is focused on establishing how Government will coordinate and target a range of responses and activities, so we can reduce harm sooner and elevate safe healing pathways. The investment plan will include primary prevention, responses, healing, the workforces, funding for relationships and collective monitoring and the learning system. .

Impact on system:

- Services are joined up and easy to navigate.
- Government commitment to addressing underlying social conditions and norms.

Links to



Activities

August 2022: Prepare component parts of investment plan - primary prevention, responses, healing, the workforces, funding for relationships and collective monitoring and the learning system.

Led by: *The Board for the Elimination of Family Violence and Sexual Violence*

Involved: *Justice, Social Development, Health, Oranga Tamariki, Police, Corrections, Te Puni Kōkiri, Education*

2 Agencies integrate community-led responses

Integrated, community-led responses supported by the investment plan are a key mechanism for delivering Te Aorerekura. By learning from integrated responses including frontline services, coordinated agency responses and best practice, we will be able to build up capability. We will support communities across the country to develop their capability to deliver effective, locally led activities.

There are opportunities to continue to strengthen the Integrated Community-led Responses approach – to ensure all people, families and whānau impacted by family violence have access to whānau-centred support, regardless of where they live in Aotearoa New Zealand.

Five existing community responses (including Whāngaia Ngā Pā Harakeke and Integrated Safety Response) have been identified with which we will work closely to test and learn from different ways of working.

This action builds off current infrastructure and learning to continue working with communities and the specialist sectors to expand our response from crisis to incorporate healing and prevention. The Integrated Community-led Responses approach will be locally led to enable the design of responses to meet the specific needs of individual communities. This will result in agencies working with communities and the specialist sectors to deliver strength-based, holistic, and cohesive responses, irrespective of the locality of the action.

Impact on people:

- Women, wāhine Māori and others impacted by violence access integrated and inclusive responses to enable safety.

Shift One: Towards strength-based wellbeing

Impact on system:

- Services are joined up and easy to navigate.
- Communities design, lead and deliver solutions to affect change.
- Government and communities work better together.

Links to



Activities

From December 2021: Work with communities and the specialist sectors to build and incorporate prevention, healing and community leadership into the five sites.

Work with five additional Whāngaia Ngā Pā Harakeke localities to stabilise crises/safety response to build capability and readiness to support Integrated Community-led Responses.

Work with communities and the specialist sectors to further expand the Integrated Community-led Responses approach to other regions, and to develop strong connections and integrated responses with specialist sexual violence services.

Led by: *The Board for the Elimination of Family Violence and Sexual Violence*

Involved: *Justice, Social Development, Health, Oranga Tamariki, Police, Corrections, Te Puni Kōkiri*

3 Strengthen wāhine Māori leadership

Te Puni Kōkiri will support wāhine Māori to realise their central role in whānau and communities through initiatives that enable wāhine to adopt, share and develop cultural practices for the benefit of whānau and whakapapa. This will create pathways for learnings from the Mana Wāhine Inquiry to build and strengthen wāhine Māori leadership.

Impact on people:

- Individuals and whānau supported to heal and overcome the trauma of violence.
- Wāhine Māori impacted by violence access integrated and inclusive responses to enable safety.

Impact on system:

- Communities design, lead and deliver solutions to affect change.

Links to



Activities

Te Puni Kōkiri's regional offices will work with Māori communities and providers in 3-6 localities to support the development of community-led initiatives focussed on wānanga or training initiatives for wāhine Māori that build cultural capability and leadership.

Initial evaluation.

Extend initiative within established localities.

Led by: *Te Puni Kōkiri*

Involved: *Manatū Wāhine*

4 Wāhine Māori leadership succession

Develop a tuakana-teina based initiative that nurtures emerging wāhine Māori leaders in the family violence and sexual violence professional and vocational fields in Aotearoa New Zealand.

Impact on people:

- Women, wāhine Māori and others impacted by violence access integrated and inclusive responses.
- Families, whānau and communities take action to prevent family violence and sexual violence.
- Communities design, lead and deliver solutions to affect change.

Impact on system:

- Government commitment to addressing the underlying social conditions and norms.
- Government and communities work better together.
- Workforces are skilled, culturally competent and sustainable.

Links to



Activities

November 2021 to June 2022: Policy development and engagement with wāhine Māori leaders and partner agencies to inform the design scope for the tuakana-teina based initiative.

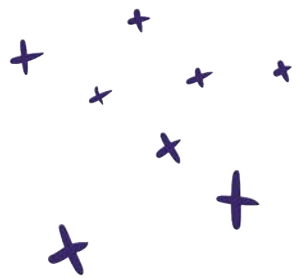
June to December 2022: Test and refine the tuakana-teina based initiative with wāhine Māori leaders and partner agencies. Identify resources required to implement the tuakana-teina based initiative.

Implement the tuakana-teina based initiative.

Led by: Policy development phase led by Manatū Wāhine.

Implementation phase lead to be determined.

Involved: Justice, Social Development, Health, Oranga Tamariki, Police, Corrections, Te Puni Kōkiri, ACC



Shift Two:

Towards mobilising communities

Mobilise communities through **sustainable, trust-based relationships** and commissioning decisions that are grounded in Te Tiriti, and sharing evidence on what works.

What is this shift about?

Where Shift One provides the framework for the implementation of Te Aorerekura, Shift Two builds collective ownership for solutions, support and resourcing for integrated community-led responses.

High-trust, collaborative and respectful relationships between tangata whenua, central and local government, the specialist sectors, communities, and businesses are foundational to achieving the moemoeā. This requires government to devolve some decisions and funding to communities while retaining clear responsibility for improving what government is accountable for delivering.

Many communities have identified eliminating family violence and sexual violence as a regional priority. These actions bring together agencies and communities to plan the responses and actions needed to eliminate violence in their rohe and community. Regional Public Service Commissioners will also use their mandate to convene and facilitate this approach.

Actions

- 5 Engage and value communities in collective monitoring, sharing and learning**
- 6 Relational approach to commissioning to better support community decision-making and needs**
- 7 Enable Te Aorerekura implementation in the regions**
- 8 Establish a Ministerial Tangata Whenua Advisory Group**
- 9 Establish an annual Te Aorerekura Hui**

Shift Two: Towards mobilising communities

5 Engage and value communities in collective monitoring, sharing and learning

People and communities who are most impacted by family violence and sexual violence have a respected ongoing role to share experiences and learning that can guide government's work programme and monitor the implementation of Te Aorerekura. Government will bring together communities, tangata whenua and the specialist sectors to work together to provide feedback and insights into what needs to be improved across family violence and sexual violence responses, healing and prevention. Government agencies will prioritise trusted and meaningful relationships, and work in ways that are safe and valued by communities.

Impact on system:

- Communities design, lead and deliver solutions to affect change.
- Government and communities work better together.
- Government commitment to addressing underlying social conditions and norms.

Links to



Activities

Government agencies work closely with communities and the specialist sectors to agree on the work programme and which actions are of particular priority.

Develop a proposal for an advisory group(s) comprising community voices and specialist family violence and sexual violence sector voices.

Led by: *The Board for the Elimination of Family Violence and Sexual Violence*

Supported by: *Social Development, Justice, Oranga Tamariki, Health, Police, Corrections, Te Puni Kōkiri, ACC, Education, Manatū Wāhine*

Shift Two: Towards mobilising communities

6 Relational approach to commissioning to better support community decision-making and needs

The social sector commissioning approach will change how the government funds and works with non-government organisations and community providers. Social sector commissioning is a key lever in mobilising local community solutions that disrupt and respond to the drivers of violence. Government has agreed to adopt the Social Sector Commissioning approach, which places trusted, meaningful relationships at the centre of traditional commissioning activities and shifts the emphasis to working more closely together from the start in pursuit of shared priorities and shared accountabilities. This action sees government agencies implementing social sector commissioning principles and approaches into the five Integrated Community-led Responses localities.

Impact on system:

- Communities design, lead and deliver solutions to affect change.
- Government and communities work better together.

Links to



Activities

Test commissioning in agreed locations.

Assess, with the communities in the five Integrated Community-led Responses localities, the impact services have had on their journeys through family violence and/or sexual violence.

Future contracts align with new approach and ongoing implementation.

Led by: *The Board for the Elimination of Family Violence and Sexual Violence*

Involved: *Social Development, Justice, Health, Police, Oranga Tamariki, Corrections, ACC*

7 Enable Te Aorerekura implementation in the regions

Regional Public Service Commissioners (RSPCs) coordinate and lead on behalf of government in the regions. RSPCs will support and facilitate implementation to give effect to the family violence and sexual violence national strategy with communities.

Impact on system:

- Communities design, lead and deliver solutions to affect change.
- Services are joined up and easy to navigate.
- Government and communities work better together.

Links to



Activities

June 2022: Support joint interagency training and strategic and operational multi-agency working groups.

December 2022: Report back on regional alignment activities investment to support cross-agency local and regional-level decision-making.

Led by: *RPSCs, with support from Social Development and all agencies*

Involved: *Social Development, Justice, Health, Police, Oranga Tamariki, Corrections, ACC*

Shift Two: Towards mobilising communities

8 Establish a Ministerial Tangata Whenua Advisory Group

Establish a tangata whenua advisory group to provide advice to the Minister for the Prevention of Family and Sexual Violence.

Impact on system:

- Communities design, lead and deliver solutions to affect change.
- Government commitment to addressing underlying social conditions and norms.
- Government and communities work better together.

Links to



Activities

February 2022: Ministerial Advisory Group established.

Ongoing implementation.

Led by: *The Board for the Elimination of Family Violence and Sexual Violence*

9 Establish an annual Te Aorerekura Hui

Te Aorerekura recognises the importance of government, tangata whenua, community and specialist sectors coming together to take stock of progress towards Te Aorerekura, share learning, experiences and agree what should happen next. The establishment of an annual hui should be seen as an enduring commitment to the moemoeā.

Impact on system:

- Services are joined up and easy to navigate.
- Communities design, lead and deliver solutions to affect change.
- Government and communities work better together.

Links to



Activities

June 2022: First hui held.

Led by: *The Board for the Elimination of Family Violence and Sexual Violence*

Involved: *Social Development, Justice, Oranga Tamariki, Health, Police, Corrections, Te Puni Kōkiri, ACC, Education, Manatū Wāhine*



Shift Three:

Towards skilled, culturally competent and sustainable workforces

Ensure the specialist, general and informal workforces are resourced and equipped to **safely respond, heal and prevent**, and **enable wellbeing**.

What is this shift about?

Shift Three builds on the first two shifts by ensuring we have workforces that respond to the different needs of our communities.

Government agencies, specialists, generalist, and informal networks all require different resources, tools and opportunities for upskilling. Government and community organisations need to have policies and practices in place to support effective, consistent responses to both family violence and sexual violence. A long-term approach to building and retaining diverse, sustainable and competent workforces is needed.

These actions strengthen both family violence and sexual violence workforces through frameworks and tools for specialists and generalists, prioritise the development of a specialist workforce for children, and provide advice for informal helpers. This shift recognises the role of community experts in leading primary prevention, and builds the primary prevention workforce because the evidence shows that this is key to eliminating family violence and sexual violence.

Actions

10 Develop and implement trauma-informed family violence and sexual violence capability frameworks for specialist workforces

11 Agencies implement capability frameworks for generalist workforces

12 Build tools for communities and informal helpers

13 Invest in upskilling community primary prevention

14 Build the specialist workforces for children

15 Build court workforce capability

10 Develop and implement trauma-informed family violence and sexual violence capability frameworks for specialist workforces

Capability frameworks, tools and training for specialist, general and voluntary family violence and sexual violence workforces, as co-designed by and for:

- Tangata whenua
- Pacific peoples
- Disabled people
- LGBTQIA+
- Older people
- Ethnic, migrant, and refugee communities, and
- Children and young people.

Implemented across the specialist sectors.

Impact on people:

- Individuals and whānau supported to heal and overcome the trauma of violence.
- Women, wāhine Māori and others impacted by violence access integrated and inclusive responses to enable safety.
- Tangata whenua, Pacific peoples, ethnic communities, LGBTQIA+ communities, older people, children and youth, and disabled communities can access tailored services and supports.

Impact on system:

- Workforces are skilled, culturally competent and sustainable.

Links to



Activities

Co-design of capability frameworks and tools completed.

Platform for training and knowledge to be shared implemented.

Led by: *The Board for the Elimination of Family Violence and Sexual Violence*

Involved: *Justice, Social Development, Health, Oranga Tamariki, Police, Corrections, Te Puni Kōkiri*

11 Agencies implement capability frameworks for generalist workforces

Government agencies will develop and implement family violence and sexual violence capability frameworks. We know that many people engaged with different workforces and we need to build capability (generalist and any specialists) on how to work in a trauma and violence-informed way, and to recognise and respond to family violence and/or sexual violence.

Impact on people:

- Women, wāhine Māori and others impacted by violence access integrated and inclusive responses to enable safety.

Impact on system:

- Workforces are skilled, culturally competent and sustainable.

Links to



Activities

December 2022: Training developed across government to train generalist workforces.

July 2024: All generalist workforces have been trained.

Led by: *The Board for the Elimination of Family Violence and Sexual Violence*

Involved: *Justice, Social Development, Health, Oranga Tamariki, Police, Corrections, Te Puni Kōkiri*

12 Build tools for communities and informal helpers

Build tools for people to recognise and respond to family violence. The tools will support everyone who needs help including those impacted by family violence (victim-survivors), their family, whānau and friends, people who use violence and informal helpers. The tools include a website with practical online help, 24/7 phone and webchat support. This means that informal helpers will be better able to recognise family violence, provide safe information and support, and be able to connect with specialist services.

Impact on people:

- Individuals and whānau supported to heal and overcome the trauma of violence.
- Women, wāhine Māori and others impacted by violence access integrated and inclusive responses to enable safety.

Links to



Activities

October 2021: First release of a website, focusing on people impacted by family violence including 24/7 webchat and phone service.

March 2022: Further online content developed for people who use violence. Piloting of 24/7 afterhours phone service is underway.

Further work will be undertaken with people with lived experience and the family violence sector to improve the help available.

Led by: *Social Development*

13 Invest in upskilling community primary prevention

Contract and train national and regional practitioners for family violence and sexual violence primary prevention. This action links to Integrated Community-led Responses (Action 2) as the community practitioners will bring a dedicated focus on prevention and strengthening, providing coordination, connection and capability building to reduce the drivers of violence for communities.

This action will create a coordinated prevention system, with more consistent access for communities to prevention action, workforce development and support across a range of settings, sectors and locations.

Impact on people:

- Reduced tolerance for violence and inequity across Aotearoa New Zealand.
- Families, whānau and communities take action to prevent family violence and sexual violence.

Impact on system:

- Communities design, lead and deliver solutions to affect change.
- Services are joined up and easy to navigate.
- Government and communities work better together.
- Primary prevention is aligned.

Links to



Activities

December 2022: 5 regional primary prevention practitioners in place to test and learn from the model and support roll-out of practitioners.

Identify long term funding, refine model, plan for scaling up, map current coordination activity and contract communities for these roles.

Led by: ACC and the Board for the Elimination of Family Violence and Sexual Violence

Involved: Oranga Tamariki, Health, Police, Te Puni Kōkiri, Social Development

14 Build the specialist workforces for children

Ensure children and young people from communities impacted by violence have a workforce that understands their needs and experiences of family violence and sexual violence.

Communities and specialist sectors to design with and for:

- Tangata whenua
- Disabled people
- Pacific communities
- LGBTQIA+
- Ethnic, refugee and migrant communities.

Impact on people:

- Children and young people understand healthy relationships, how to seek help, and can access tailored services.
- Women, wāhine Māori and others impacted by violence access integrated and inclusive responses to enable safety.

Impact on system:

- Communities design, lead and deliver solutions to affect change.
- Workforces are skilled, culturally competent and sustainable.

Links to



Activities

December 2021: Scoping of investment in workforce initiatives started to improve the capability of the family violence and sexual violence specialist workforces that work with children and young people.

Led by: Oranga Tamariki

Involved: Social Development, Health, Corrections, Te Puni Kōkiri, Justice

15 Build court workforce capability

Lift workforce capability by training Ministry of Justice staff, the legal profession, and other professionals in court to increase skills and capability for engaging with people impacted by violence.

Continue to support judicial education and benchbooks.

Impact on people:

- Participants in the justice system are safe, supported and suffer less harm.
- Women, wāhine Māori and others impacted by violence access integrated and inclusive responses to enable safety.

Impact on system:

- Workforces are skilled, culturally competent and sustainable.

Links to



Activities

December 2022: Workforce training package developed with representatives of court participants and communities, including people impacted by violence (victims-survivors) and people who use violence.

Implement workforce training.

Led by: Justice

Shift Four:

Towards investment in primary prevention

Invest in a **Te Tiriti-based primary prevention model** that strengthens the protective factors so that family violence and sexual violence do not occur.

What is this shift about?

Shift Four is focused on preventing family violence and sexual violence occurring; promoting protective factors and decreasing the factors that drive violence.

Te Aorerekura recognises that a primary prevention strengthening model based on Te Tiriti is fundamental to reducing future harm. These actions enhance and scale up what works. They align and unify our approach and reinforce different actions across agencies and communities.

There is emerging international and local insights and experiences that support our understanding about how to prevent violence and gaps remain in our knowledge about the scale of harm. As part of the first set of actions Te Aorerekura focuses on increasing our expanding our kete

of primary prevention interventions. These actions will use our growing understanding to develop different solutions for ethnic and diverse communities. We will start by coordinating and aligning work underway at local, regional and national levels so that communities can learn and share what works, improve and refresh education curricula, and build healthy relationship resources. These actions involve both targeted and universal actions across family violence and sexual violence.

By expanding on work that is already proving to be effective, aligning to a unifying Primary Prevention System Model, and embedding it across all government agencies, we will centre prevention at the heart of what we do.

Actions

16 Adopt the Primary Prevention System Model

19 Develop the Oranga Whakapapa programme

22 Develop and deliver a sexual violence primary prevention campaign for tangata whenua and Tauwiwi

24 Holistic support for safe early years

17 Develop tools to support healthy, consensual relationships for young people

20 Develop community mobilisation infrastructure to lead sexual violence primary prevention

23 Develop prevention programmes for ethnic communities

25 Develop social and emotional learning for children

18 Refresh the health and physical education curricula

21 Deliver prevention initiatives: Campaign for Action on Family Violence, E Tū Whānau and Pasefika Proud as well as for other population groups including older people

26 Strengthen community-led solutions to prevent child sexual abuse

Shift Four: Towards investment in primary prevention

16 Adopt the Primary Prevention System Model

Government agencies adopt the Te Tiriti-based family violence and sexual violence Primary Prevention System Model (refer to page 55 in Strategy) that reflects the integrated thinking of the Tokotoru model.

Impact on people:

- Reduced tolerance for violence and inequity across Aotearoa New Zealand.

Impact on system:

- Primary prevention is aligned.

Links to



Activities

June 2022: Government agencies have mapped activity and resources across the model.

October 2023: Strategic alignment of agency activities and investment across the model agreed and in place.

Led by: ACC

Involved: Oranga Tamariki, Social Development, Health, Education

17 Develop tools to support healthy, consensual relationships for young people

Co-develop and share a best practice primary prevention toolkit for communities focused on healthy relationships across the life course (Includes delivery of Mates & Dates until December 2022).

Impact on people:

- Reduced tolerance for violence and inequity across Aotearoa New Zealand.
- Children and young people understand healthy relationships, how to seek help, and can access tailored services.

Impact on system:

- Primary prevention is aligned.

Links to



Activities

December 2022: Toolkit and framework available for communities aligning to the refresh of the New Zealand curricula.

Implement toolkit across New Zealand communities.

Led by: ACC

Involved: Education, Oranga Tamariki, Social Development, Health

Shift Four: Towards investment in primary prevention

18 Refresh the health and physical education curricula

Refresh sections of the New Zealand Curriculum and Te Marautanga o Aotearoa to strengthen the focus on teaching and learning about healthy relationships. This will support workforce development and the production of teaching and learning resources.

Impact on people:

- Children and young people understand healthy relationships, how to seek help, and can access tailored services.
- Primary prevention is aligned.

Links to



Activities

February 2023: Implementation design for Te Marautanga o Aotearoa refresh.

During 2023: Health and Physical Education Learning Area (of the New Zealand Curriculum) content is designed and tested with the sector.

From 2024: Health and Physical Education content ready for supported implementation in schools; refreshed Te Marautanga o Aotearoa ready to commence supported implementation in kura.

December 2023: Curricula developed.

Led by: Education **Involved:** Health

19 Develop the Oranga Whakapapa programme

Design with whānau, hapū and communities approaches for tamariki, rangatahi and whānau to know about mana-enhancing and tapu-enriched relationships to increase prevalence of healthy and consensual relationships.

Develop a nationally cohesive approach that will enable locally led responses and support local mātauranga.

Impact on people:

- Children and young people understand healthy relationships, how to seek help, and can access tailored services.
- Families, whānau and communities take action to prevent family violence and sexual violence.

Impact on system

- Communities design, lead and deliver solutions to affect change.
- Government commitment to addressing the underlying social conditions and norms.

Links to



Activities

December 2022: Develop a clear understanding of the mātauranga of positive relationships for tangata whenua, including the enablers for whānau.

Work with whānau, hapū and communities to develop locally led oranga whakapapa activities (incorporating current local approaches to protect whakapapa through mana-enhanced and tapu-enriched relationships).

Led by: ACC

Shift Four: Towards investment in primary prevention

20 Develop community mobilisation infrastructure to lead sexual violence primary prevention

Design and build across Aotearoa New Zealand a community prevention network, that is enabled and supported nationally. The network will lead sexual violence primary prevention, community mobilisation and systems change to promote healthy consensual relationships and oranga whakapapa with communities across Aotearoa New Zealand.

Impact on system:

- Communities design, lead and deliver solutions to affect change.
- Primary prevention is aligned.

Links to



Activities

June 2022: Approach designed for procurement.

December 2022: Network of prevention partners in place.

Led by: ACC

21 Deliver prevention initiatives: Campaign for Action on Family Violence, E Tū Whānau and Pasefika Proud as well as for other population groups including older people

Develop a new targeted campaign for young people to promote safe, positive and equal relationships. Phase one of the campaign will use evidence based on the voices of young people, and will focus on and be tested with people aged 18-20. Build our collective understanding of how communities can support behaviour change in men using violence and support increased community capacity. Design and partner around new approaches to counteract harmful norms and beliefs through advertising and social media. Keep going with and consolidate E Tū Whānau approach and frameworks. E Tū Whānau is based on tikanga and supports communities - including marae, runanga, whānau affiliated to gangs and, in more recent years, the former refugee and migrant communities, to strengthen factors that protect whānau. Continue to enhance, learn from, and consolidate the Pasefika Proud approach and frameworks. Pasefika Proud is a social change movement 'by Pacific for Pacific' to boost wellbeing for Pacific families and transform attitudes, behaviours and norms that enable violence. Develop campaigns and programmes to support other communities including older people.

Impact on people:

- Children and young people understand healthy relationships, how to seek help, and can access tailored services and can access tailored services.
- Families, whānau and communities take action to prevent family violence and sexual violence.
- Reduced tolerance for violence and inequity across Aotearoa New Zealand.
- People who use violence are accountable and supported to change.

Shift Four: Towards investment in primary prevention

Impact on system:

- Communities design, lead and deliver solutions to affect change.
- Government commitment to addressing the underlying social conditions and norms

Links to



Activities

June 2022: Develop a campaign to support positive, safe and respectful relationships.

December 2022: Work is underway with community leaders to support positive behaviour change in men.

Continue to enhance, learn from, and consolidate the E Tū Whānau approach and frameworks to support effective community action.

Continue to enhance, learn from, and consolidate the Pasefika Proud approach and frameworks.

Scope expansion of all campaigns and programmes to further communities, including older people.

Led by: *Social Development*

22 Develop and deliver a sexual violence primary prevention campaign for tangata whenua and Tauwiwi

Establish a large-scale, multifaceted sexual violence primary prevention communications and social marketing (guided by te ao Māori) to galvanise a national conversation to promote healthy relationships and oranga whakapapa (based on ACC's Preventable campaign).

Impact on people:

- Children and young people understand healthy relationships, how to seek help, and can access tailored services.

Impact on system:

- Communities design, lead and deliver solutions to affect change.
- Primary prevention is aligned.
- Government commitment to addressing the underlying social conditions and norms.

Links to



Activities

December 2022: Established platform for positive storytelling and behaviour change for communities to engage with.

Oranga whakapapa/healthy relationships behaviour change campaign launched.

Led by: *ACC*

Shift Four: Towards investment in primary prevention

23 Develop prevention programmes for ethnic communities

Develop prevention programmes to meet the needs of ethnic communities, including new migrant and refugee communities.

Impact on people:

- Reduced tolerance for violence and inequity across Aotearoa New Zealand.
- Ethnic communities, LGBTQIA+ communities, older people, children and youth, and disabled communities can access tailored services and supports.

Impact on system:

- Communities design, lead and deliver solutions to affect change.
- Government commitment to addressing underlying social conditions and norms.
- Primary prevention is aligned.
-

Links to



Activities

Develop a range of programmes with community.

Develop culturally-appropriate and accessible prevention resources.

Set up initiatives with ethnic communities that provide information and share knowledge on family violence and sexual violence.

Improve capability in mainstream family violence and sexual violence prevention programmes to better respond to the needs of ethnic communities.

Design specific prevention programmes to meet the needs of ethnic communities, including new migrant and resettled communities.

Led by: Social Development

24 Holistic support for safe early years

Establish and test the feasibility of a co-commissioning model of early years primary child health and maternal mental health services together with social services in South Auckland leveraging off the Place Based Initiative. This will include supporting a holistic approach to providing early years services to whānau that will explore ways of linking family violence and sexual violence prevention approaches with services being provided to families in the first 1,000 days.

Impact on people:

- Women, wāhine Māori and others impacted by violence access integrated and inclusive responses to enable safety.

Impact on system:

- Government and communities work better together.
- Services are joined up and easy to navigate.
- Government commitment to addressing the underlying social conditions and norms.

Links to



Activities

March 2022: Design co-commissioning approach with partners in South Auckland.

Led by: Health

Involved: Child Wellbeing and Poverty Reduction Group, Oranga Tamariki, Police, Social Development, ACC

Shift Four: Towards investment in primary prevention

25 Develop social and emotional learning for children

Complete trials to support young children (0-6 years) in early learning services to develop capacities for self-regulation, resilience and social skills as part of the wider work programme to improve social cohesion. Improving social and emotional capabilities in childhood, including the capability for self-regulation, provides foundational social skills for children that positively influence their life outcomes.

Impact on people:

- Children and young people understand healthy relationships, how to seek help, and can access tailored services.

Links to



Activities

January–April 2022: Evaluation of trials.

June 2022: Final evaluation report is produced.

June 2022: Reach up to 6,000 children, 130 Early Learning Services and 120 teachers during the 12 month pilot that ends 30 June 2022.

Scope and extend the initiative to more children and Early Learning services.

Led by: Education

26 Strengthen community-led solutions to prevent child sexual abuse

Design approaches with whānau, hapū and communities for the prevention of child sexual abuse.

Develop capability frameworks and support to enable child sexual abuse prevention.

Impact on people:

- Children and young people understand healthy relationships, how to seek help, and can access tailored services.
- Families, whānau and communities take action to prevent family violence and sexual violence.

Impact on system:

- Government and communities work better together.
- Communities design, lead and deliver solutions to affect change.
- Government commitment to addressing the underlying social conditions and norms.

Links to



Activities

December 2022: Build capability frameworks and develop culturally-appropriate and accessible resources for communities.

Identify opportunities to scale or increase capability and/or awareness to prevent child sexual abuse within current investment.

Led by: ACC

Involved: Oranga Tamariki

Shift Five:

Towards safe, accessible and integrated responses

Ensure accessible, safe and integrated **responses** meet **specific needs, do not perpetuate trauma,** and **achieve safety and accountability.**



What is this shift about?

Te Aorerekura recognises that response services must be safe, timely and accessible, available early in the places where people need support and are provided by trusted people.

People impacted by violence need a range of responses including safety, health services, advocacy, justice responses, therapeutic services, and financial and housing support. Specific culturally safe and appropriate approaches need to be developed with and for people with different cultural backgrounds, abilities, languages, understandings and profiles of violence. This will help ensure that people have confidence and trust in responses.

Shift Five will strengthen and expand responses to hold people accountable and better support people who have used violence or are worried about their thoughts and actions, including people who do not meet the criteria for a service when Police and courts are not involved.

The actions in this area will continue to integrate services to ensure people get help at the first opportunity and are connected to the supports they need. We are prioritising actions in this area that focus on immediate need or where supports are currently limited.

Actions

27 Develop new practice guidelines for supporting participants in court proceedings

29 Develop a plan to fill the service gaps for family violence

31 Develop a case management system for family violence responders

28 Implement safeguarding responses for disabled and vulnerable adults

30 Develop a plan to fill the service gaps for sexual violence

32 Improve the Family Start service

27 Develop new practice guidelines for supporting participants in court proceedings

Aligning with the judiciary's vision for the District Court – Te Ao Mārama – design and implement new practice guidelines and supporting information for proceedings involving those impacted by family violence and/or sexual violence.

Impact on people:

- Participants in the justice system are protected, safe, and supported.
- Women, wāhine Māori and others impacted by violence access integrated and inclusive responses to enable safety.

Impact on system:

- Workforces are skilled, culturally competent and sustainable..
- Communities design, lead and deliver solutions to affect change.

Links to



Activities

December 2022: Practice guidelines developed with representatives of court participants and communities, including people impacted by violence (victims-survivors) and people who use violence.

Work towards the implementation of the guidelines.

Followed by full implementation and maintenance of best practice in family violence and sexual violence proceedings.

Led by: Justice

28 Implement safeguarding responses for disabled and vulnerable adults

Build on the work undertaken with the Waitematā and MidCentral District Health Board pilots to expand the roll-out of the Safeguarding Framework and interagency safeguarding adults from abuse approach (SAFA) to preventing, reporting, investigating and responding to alleged or identified family harm and other forms of abuse, neglect or harm of vulnerable adults.

Disabled people need specific responses and approaches due to the reality that they experience a disproportionate level of family and sexual violence. The impacts of violence and abuse are exacerbated by a lack of coordinated and effective supports.

Impact on people:

- Tangata whenua, Pacific peoples, ethnic communities, LGBTQIA+ communities, older people, children and youth, and disabled communities can access tailored services.

- Women, wāhine Māori and others impacted by violence access integrated and inclusive responses to enable safety.

Impact on system:

- Services are joined up and easy to navigate.

Links to



Activities

Work with Disabled People's Organisations and other key disability stakeholders to identify how the Safeguarding Adults framework and approach can work for all disabled people; and how to expand this beyond the Waitematā and Manawatu pilots.

Incorporate the Safeguarding Adults framework and approach at locations with strong readiness.

Involved: Social Development, Health - in relation to Mana Whaikaha, Police, ACC

29 Develop a plan to fill the service gaps for family violence

Through 2020, work began to ensure timely access to specialist services for people impacted by family violence, reducing waiting lists for people who use violence and enabling continued access to elder abuse services. Action 29 builds on this work.

Government agencies and service providers will work together with communities, and specialist sectors to better understand service needs and gaps. Starting with a focus on people who use violence or are at risk of using violence, this involves identifying and preparing a plan to fill service gaps in family violence response services, including better accessibility, cultural responsiveness, and community needs.

Impact on people:

- Tangata whenua, Pacific peoples, ethnic communities, LGBTQIA+ communities, older people, children and youth, and disabled communities can access tailored services.
- People who use violence are accountable and supported to change.
- Women, wāhine Māori and others impacted by violence access integrated and inclusive responses to enable safety.

Impact on system:

- Communities design, lead and deliver solutions to affect change.
- Services are joined up and easy to navigate.

Links to



Activities

July 2022: Work with specialist sectors and government agencies to scope service needs to fill gaps, including services supporting those using violence.

Scope service design for services with Tangata Whenua, Pacific peoples, Ethnic communities, LGBTQIA+ communities, older people, children and youth, and Disabled communities.

Establish an investment plan for the rollout of response services for the tangata whenua and the above communities for funding these services.

Led by: Social Development

Involved: Oranga Tamariki, Police, Health



30 Develop a plan to fill the service gaps for sexual violence

Through 2020, service gaps were filled in sexual harm crisis support services, services for male survivors, and court support services, and kaupapa Māori service development started. Work is planned to understand gaps in services for LGBTQIA+ communities and people seeking long term support services. Action 30 builds on this work.

Government agencies and service providers will work together with communities, and specialist sectors to better understand service needs and gaps. Starting with a focus on tangata whenua, Pacific people and disabled people, this involves identifying and preparing a plan to fill service gaps in sexual violence response services, including better accessibility, cultural responsiveness, and community needs.

Work with providers to align the Sexual Abuse Assessment and Treatment Service (SAATS) and work with providers of SAATS and Non-Fatal Strangulation Service to strengthen and align existing services.

Impact on people:

- Tangata whenua, Pacific peoples, ethnic communities, LGBTQIA+ communities, older people, children and youth, and disabled communities can access tailored services.
- People who use violence are accountable and supported to change.

Impact on system:

- Services are joined up and easy to navigate.
- Communities design, lead and deliver solutions to affect change.

Links to



Activities

June 2023: Work with specialist sectors, government agencies to scope service needs. Scope service design with tangata whenua, Pacific peoples and disabled communities, followed by an investment plan for funding these services.

Followed by developing the investment plan for sexual violence services for tangata whenua, Pacific and disabled communities.

Service gaps plan led by: *Social Development*

Alignment and strengthening of sexual abuse services led by: *ACC*

Involved: Health and Police

Shift Five: Towards safe, accessible and integrated responses

31 Develop a case management system for family violence responders

Project Whetū delivers a national case management system that supports integrated case management for crisis responses as well as enhanced connections to support ongoing wellbeing that mitigate family violence risk. The Whetū case management system will adhere to the requirements of the Family Violence Act 2018 and Privacy Act 2020 and the government's Data Protection and Use Policy.

Impact on people:

- Women, wāhine Māori and others impacted by violence access integrated and inclusive responses to enable safety.

Impact on system:

- Services are joined up and easy to navigate.

Links to



Activities

July 22: Continue to Request for Information (RFI) and Business Case proposals.

Work is underway with a technology provider to develop the technology and implement the system.

Led by: Police

32 Improve the Family Start service

Family Start is a home visitation programme funded by Oranga Tamariki and delivered by NGO providers. Family Start supports whānau who are struggling with challenges that put the health, education, and wellbeing of pepi and tamariki aged 0–5 at risk.

Over time, establish more services, reduce whānau worker caseloads, build capability and enhance cultural responsiveness.

Impact on people:

- Women, wāhine Māori and others impacted by violence access integrated and inclusive responses to enable safety.
- Families, whānau and communities take action to prevent family violence and sexual violence.

Links to



Activities

From late 2021: Work is underway to explore ways to reduce whānau worker caseloads.

Investigate development of training and resources to build capability of whānau workers to respond to family violence and sexual violence.

Scope work with other Joint Venture agencies to identify opportunities to expand and enhance Family Start, as part of cross-agency efforts to provide support for pepi and tamariki in their early years.

Scoping work is followed by the identification of potential new sites for Family Start.

Led by: Oranga Tamariki

Involved: Health, Social Development, and Police

Shift Six:

Towards increased capacity for healing

Increased capacity for **healing** to acknowledge and address trauma for people and whānau.



What is this shift about?

Te Aorerekura sets out a need for more appropriate, tailored specialist and whānau-centred healing, recovery, and restoration services.

This is essential to address the intergenerational trauma of childhood exposure to family violence and sexual violence. Many people who use violence have experienced trauma as a child. This trauma is often unaddressed and contributes to the choices they make to use violence as adults.

Until people can heal and restore, violence and trauma continue to affect them. Direct experience of violence, or exposure to it, has negative impacts on the health, education and social development of children and young people, as well as on their and future economic wellbeing.

Actions in this Shift will assess the gaps in services and undertake service design for specialist healing and restoration services to meet the needs of tangata whenua and communities, including Pacific peoples, children and young people, LGBTQIA+, older people, disabled people and ethnic communities. We will need to work to strengthen existing and new innovative services and supports that remove the stigma of violence and strengthen community responses, including kaupapa Māori healing solutions.

Actions

- | | |
|---|--|
| 33 Undertake an analysis of healing services and responses to determine gaps and opportunities | 34 Develop training and resources for parents, caregivers, and whānau |
| 35 Design local tangata whenua services for sexual violence healing and restoration | 36 Extend and expand whānau-centred initiatives |
| 37 Extend and expand whānau-centred early intervention | |

Shift Six: Towards increased capacity for healing

33 Undertake an analysis of healing services and responses to determine gaps and opportunities

Work together with communities, tangata whenua and the specialist sectors to map and understand what healing services are available and what the gaps and opportunities are to improve healing across Aotearoa New Zealand.

Impact on people:

- Women, wāhine Māori and others impacted by violence access integrated and inclusive responses to enable safety.
- Individuals and whānau supported to heal and overcome the trauma of violence.

Impact on system:

- Communities design, lead and deliver solutions to affect change.

Links to



Activities

August 2022: Work is underway with tangata whenua, communities and the specialist sectors to map healing services across the country so this work can be fed into the Investment Plan (Action 1).

Led by: Oranga Tamariki

34 Develop training and resources for parents, caregivers, and whānau

Work together to create national training and education programmes for parents, caregivers and whānau to recognise and respond to harmful sexual behaviours exhibited by children/young people.

Impact on people:

- Individuals and whānau supported to heal and overcome the trauma of violence.
- Families, whānau and communities take action to prevent family violence and sexual violence.

Impact on system:

- Communities design, lead and deliver solutions to affect change.

Links to



Activities

December 2022: Undertake an analysis of what training and resources are available, including whether they are effective.

Design an engagement approach to work alongside iwi, hapū and communities to develop resources.

Support and enable te mana o te rangatahi through the Social Media Innovation Fund.

Enable and support the development of training and resources that can be tailored locally and to specific communities.

Implement the roll-out of training and resources, alongside iwi, hapū, and communities.

Led by: Oranga Tamariki **Involved:** Health, ACC

Shift Six: Towards increased capacity for healing

35 Design local tangata whenua services for sexual violence healing and restoration

Building off previous co-design and insights with community, we will design regionally based, tangata whenua-led services by local kaupapa Māori suppliers for people with mental injuries from sexual violence to ensure injured tangata whenua have greater access to services, improved experiences of ACC care, and better health outcomes.

Impact on people:

- Individuals and whānau supported to heal and overcome the trauma of violence.
- Tangata whenua, Pacific peoples, ethnic communities, LGBTQIA+ communities, older people, children and youth, and disabled communities can access tailored services.

Impact on system:

- Communities design, lead and deliver solutions to affect change.
- Workforces are skilled, culturally competent and sustainable.

Links to



Activities

December 2022: All regions have designed and implemented services.

Led by: ACC **Involved:** Health



Shift Six: Towards increased capacity for healing

36 Extend and expand whānau-centred initiatives

Extend and expand whānau-centred models to more communities to support kaupapa Māori service providers to work with whānau experiencing low to medium levels of family violence.

Support service providers with more long-term resourcing. This resourcing allows for services to:

- work collectively with their internal partners.
- address service provision gaps.
- develop long-term strategic priorities.
- provide wraparound services for addressing and preventing family violence and sexual violence.

Impact on people:

- Individuals and whānau supported to heal and overcome the trauma of violence.
- Tangata whenua, Pacific peoples, ethnic communities, LGBTQIA+ communities, older people, children and youth, and disabled communities can access tailored services.

Impact on system:

- Communities design, lead and deliver solutions to affect change.
- Workforces are skilled, culturally competent and sustainable.

Links to

2

3

CYW

HOK

Activities

December 2022: Current service providers have access to more long-term and outcomes focused funding, allowing for long-term planning.

July 2022: Increase in the number of communities where kaupapa Māori service providers are working with whānau from four to eight locations.

Led by: *Te Puni Kōkiri*



37 Extend and expand whānau-centred early intervention

Extend and expand the Ngā Tini Whetu initiative as a whānau-centred early intervention prototype designed to strengthen families and improve the safety and wellbeing of children, through Whānau Ora and other agency funding.

Impact on people:

- Individuals and whānau are supported to heal and overcome the trauma of violence.
- Children and young people understand healthy relationships, how to seek help, and can access tailored services.

Impact on system:

- Government and communities work better together.

Links to



Activities

June 2022: The Ngā Tini Whetu initial prototype is completed (including the completion of a workforce development report, the outcomes and indicators programme confirmed, and outcomes report completed).

Prototype extended, multi-year funding arrangements are in place and with more agencies involved.

Expand the number of whānau engaged in the programme.

Further develop, expand and extend the whānau-centred early intervention prototype, including to the South Island.

Led by: *Te Puni Kōkiri*

Involved: *Oranga Tamariki, ACC*

38 Continuously develop and improve the learning system through the collection of evidence and voices

As evidence emerges and evolves and our collective understanding deepens, Te Aorerekura will bring together a collaborative learning system. That system will enable tangata whenua, communities, the sectors and government to explore, create and publish:

- a research and evaluation plan for family violence and sexual violence
- a process for continuous improvement through the analysis and sharing of data and insights.
- new data sources and collection systems.

Government, communities, tangata whenua and the specialist sectors will also work together to develop tools for providing feedback and insights into what needs to be improved across family violence and sexual violence responses, healing and prevention.

Impact on system:

- Government and communities work better together.

Links to



Activities

June 2022: Draft outcomes framework delivered for consideration at Annual Te Aorerekura Hui.

June 2022: Draft research plan – gaps and opportunities delivered for consideration at Annual Te Aorerekura Hui.

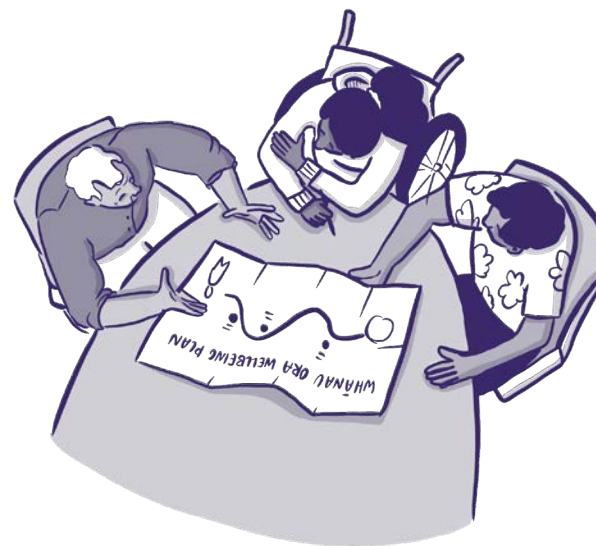
Through 2022: Plan for work with communities on shared measures and data collection/ dissemination.

December 2022: Delivery of the draft evaluation plan.

Continue with the Crime and Victims Survey.

Led by: *The Social Wellbeing Agency*

Involved: *ACC, Oranga Tamariki, Social Development, Justice, Corrections, Health, Te Puni Kōkiri, Education, Manatū Wāhine, Police*



Learning and monitoring

39 Work together to finalise the measurement framework

Work with tangata whenua, communities and the specialist sectors to develop the measurement framework including measures to eliminate family violence and sexual violence.

Impact on system:

- Government and communities work better together.

Links to



Activities

Through 2022: Work with tangata whenua, communities, and specialist sectors to develop the plan on measures and data collection.

December 2022: Delivery of the draft measurement framework.

Led by: *The Social Wellbeing Agency*

Involved: *ACC, Oranga Tamariki, Social Development, Justice, Corrections, Health, Te Puni Kōkiri, Education, Manatū Wāhine, Police*

40 Invest in monitoring and learning to build the evidence base for primary prevention

Establish a learning programme that captures monitoring, evaluation and research mechanisms for the primary prevention of family violence and sexual violence (both kaupapa Māori and Tauīwi).

Impact on system:

- Government and communities work better together.

Links to



Activities

December 2022: Establish a social norms survey, primary prevention system survey, 12-month prevalence survey, media tracking and population-level indicators.

January 2024 onwards: Increased efficacy in primary prevention approaches and investment.

Led by: *ACC*

Involved: *Social Development, Health*

Published by the Board of the Elimination of Family Violence and Sexual Violence,
Te Kāwanatanga o Aotearoa | New Zealand Government, December 2021.

For more information go to www.violencefree.govt.nz

2021 © Crown Copyright

This work is licensed under the Creative Commons Attribution 4.0 New Zealand licence.

You are free to copy, distribute and adapt the work, as long as you attribute the work to the New Zealand Government and follow any other licence terms. To see a copy of this licence, visit creativecommons.org/licenses/by/4.0

Exceptions. Please note that this licence does not apply to any logos which can not be re-used without express permission.

ISBN 978-0-473-61034-0



**The National Strategy to Eliminate
Family Violence and Sexual Violence**